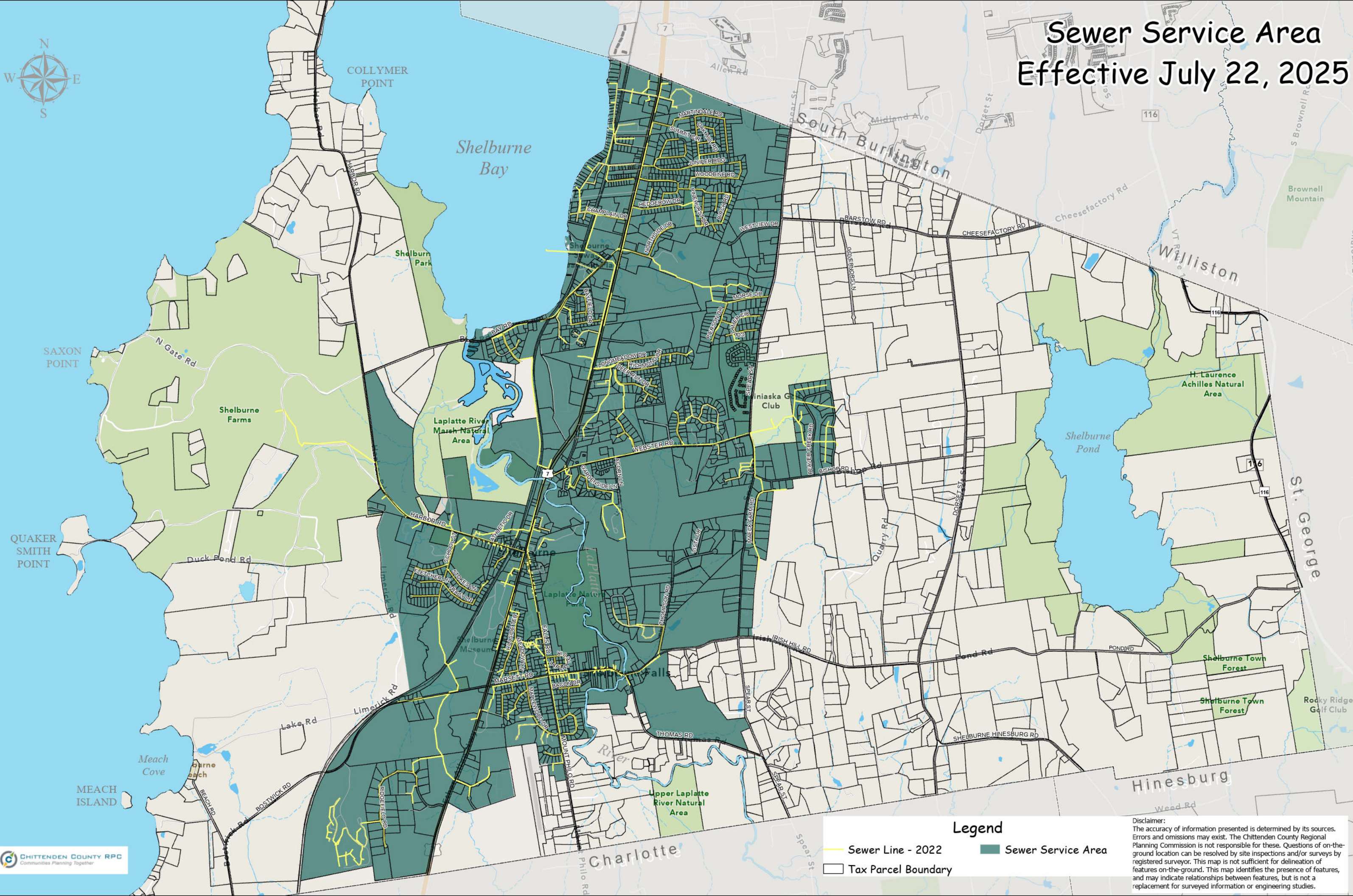


# Sewer Service Area Effective July 22, 2025



**Legend**

- Sewer Line - 2022
- Sewer Service Area
- Tax Parcel Boundary

**Disclaimer:**  
The accuracy of information presented is determined by its sources. Errors and omissions may exist. The Chittenden County Regional Planning Commission is not responsible for these. Questions of on-the-ground location can be resolved by site inspections and/or surveys by registered surveyor. This map is not sufficient for delineation of features on-the-ground. This map identifies the presence of features, and may indicate relationships between features, but is not a replacement for surveyed information or engineering studies.